



Our Business

We design, manufacture, and supply a wide range of instruments and equipment needed by geotechnical and environmental professionals. In addition, we offer services related to our products, including training and technical support, equipment rentals, repair and calibration, and field services.

Our expertise is the result of many years of experience. Our geotechnical instruments have been manufactured under the Slope Indicator name since 1958; our materials testing equipment, originally under the Brainard Kilman name, since 1965; and our environmental pumps, since 1990.

Our Profile

- Offices in the USA, Canada, Australia and China.
- Distributors in 33 countries.
- Ninety employees.
- Recognized leader in geotechnical instrumentation.
- Approximately 33% of sales generated from international business.
- Increasing expertise in wireless remote data acquisition and control.



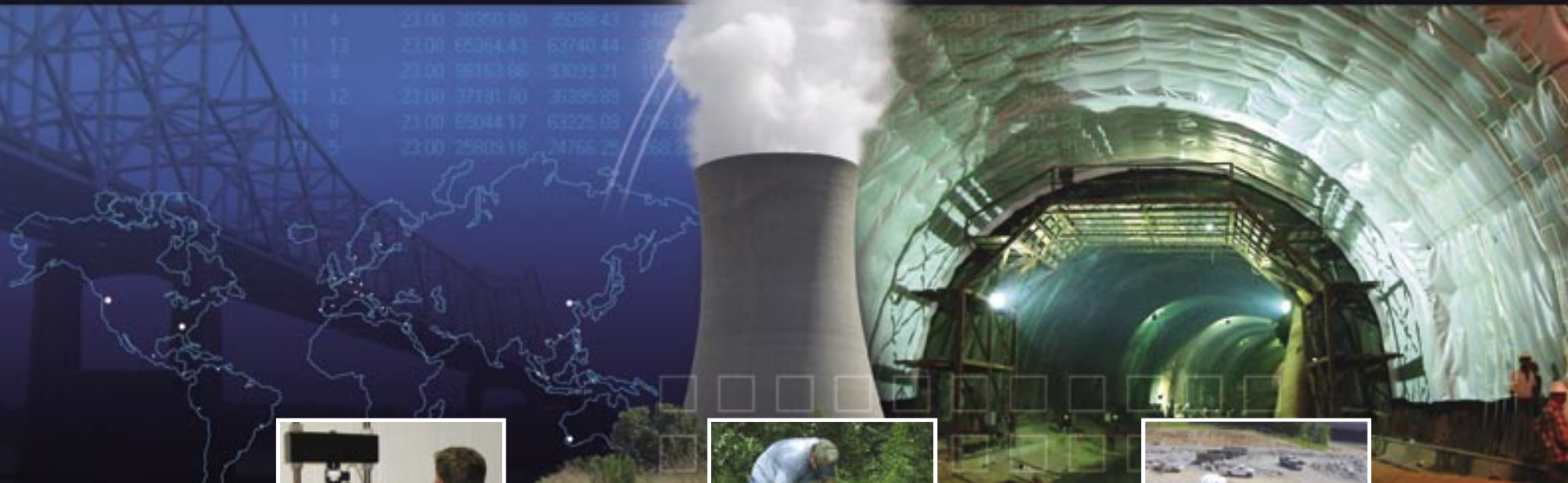
Our Customers

DGSi's customers include consulting engineers and scientists, earth and civil contractors, universities, government entities, research laboratories and civil and environmental construction companies and are spread across all states in the USA and more than 50 countries.

Our Manufacturing Operations

- Manufacturing operations in Stone Mountain, Georgia (30,000 ft²) and Mukilteo, Washington (22,000 ft²).
- 11,000 orders per year involving more than 15,000 part numbers.
- We are on course to achieve ISO 9000-2000 certification.
- Research and development in both facilities is carried out by our team of electronic, mechanical, and software engineers.

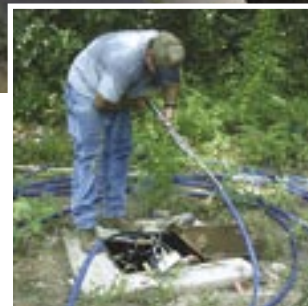




Materials Testing

Laboratory and field equipment for testing soil, concrete, asphalt, and geosynthetics.

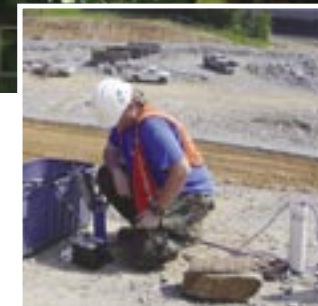
- Concrete Testing Equipment and Supplies
- Asphalt Testing Equipment and Supplies
- Soil Testing Equipment and Supplies
- Geosynthetics Testing Equipment
- General Laboratory Supplies



Environmental

Pumps and instruments for monitoring and remediation of ground and surface water.

- Ground Water Remediation Pumps
- Ground Water Sampling Pumps
- Well Development Pumps
- Water Quality Meters
- Landfill Leachate Pumps
- Stormwater Sampling and Monitoring
- Remote Monitoring



Geotechnical and Structural

Sensors and systems for monitoring tilt, displacement, pressure, and strain.

- Inclinometer Systems
- Tiltmeters and Beam Sensors
- BCS Tunnel Convergence System
- Strain Gauges and Load Cells
- Piezometers and Pressure Cells
- Extensometers and Settlement Systems
- Web-based Data Acquisition





In 1957, the first production-model of the inclinometer was used to monitor movement of the Greenland Ice Cap. The operator is Stanley D Wilson, the inventor of the inclinometer and co-founder of the Slope Indicator Company.



What Makes Us Different?

- Single-source supplier for geotechnical and environmental products
- Direct technical support for quick, accurate answers
- Responsive, dedicated customer service
- Consistent quality in products and service
- Ability to provide specialty products
- Field support services
- Rental and calibration services
- Useful and informative web sites

History of Excellence

Durham Geo-Enterprises, Inc. (DGE) was organized as a Georgia corporation in 1994. In 1997, DGE purchased the assets of two business segments from Boart Longyear. These are materials testing equipment and specialized pneumatic pumps to remove contaminated groundwater. In November 2000, DGE purchased the assets of Slope Indicator Company, a leading manufacturer and distributor of geotechnical instrumentation. Slope Indicator has been in business in the Seattle, Washington area for nearly 50 years.

www.DGSI.info


DURHAM GEO SLOPE INDICATOR

12123 Harbour Reach Dr
 Mukilteo, WA, USA 98275
 Tel 425-493-6200
 Fax 425-493-6250
 solutions@slope.com

2175 West Park Court
 Stone Mountain, GA, USA 30087
 Tel: 770-465-7557
 Fax: 770-465-7447
 solutions@durhamgeo.com